

MASTON

**WISE
TINT**



2-COMPONENT TINTING SOLUTION

IN ONE CAN – ALWAYS READY TO USE



THOUSANDS OF COLORS



HIGH STOCK ROTATION



LOW INVESTMENT



FAST AND ACCURATE

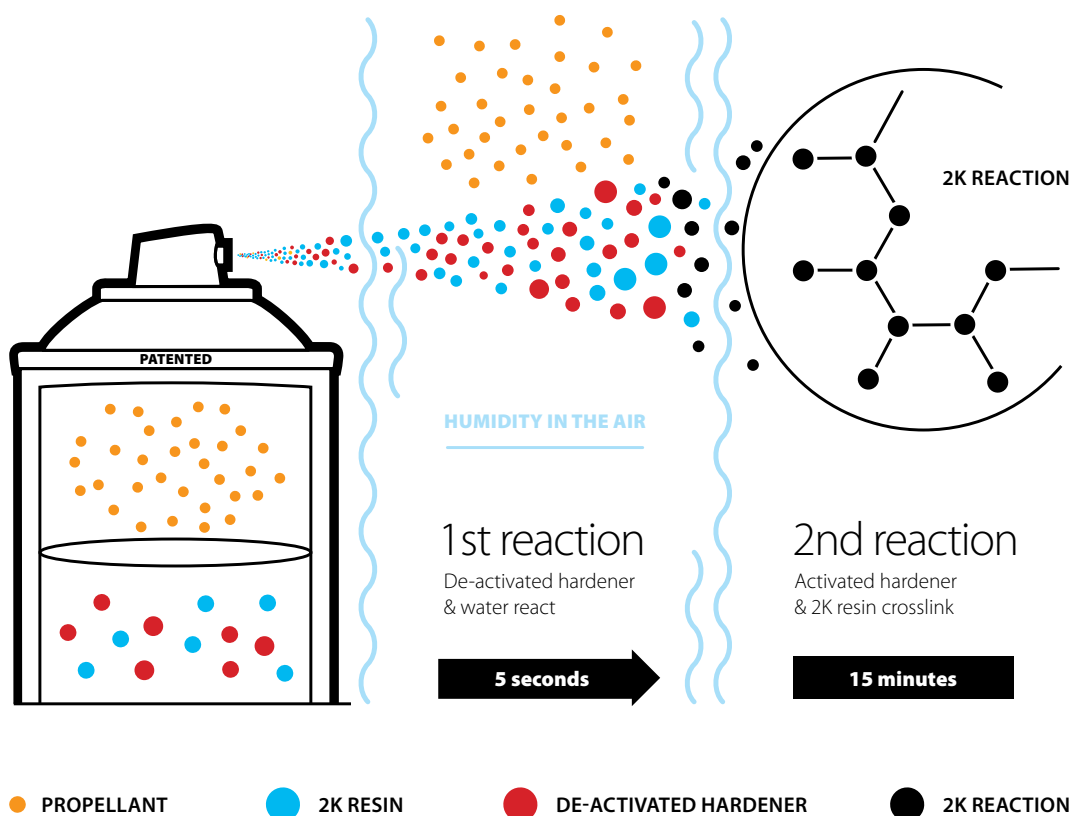


LONG POTLIFE

2K Tinting Solution

2K TINTING SOLUTION is the quickest and easiest way to tint and pack custom colours in 2K cans. The solution supports RAL and NCS colour standards and much more.

How does Wise 2K[©] work?



WISE 2K™ technology licensed by Wisespray International Ltd. www.wisespray.com. International patents pending. Two component spray paint. One compartment can. Unlimited Potlife. WISE 2K™ is a trademark or registered trademark of Wisespray International Ltd.

① The online software www.2kmix.com

EASY TO USE. The colors are easy to identify and the formulas are shown as absolute or accumulative weights in grams. If the individual paste amount is not high enough for accurate tinting, the software advises how many cans should be filled for color accuracy. For serial filling of the same color, simply select the amount of cans to be filled and mix the desired amount in one go.

② Fast, easy & accurate

THE COLOR RETRIEVAL solution works with ready-to-mix colorants. The formulas are designed for the optimal ratio of resin and hardener.

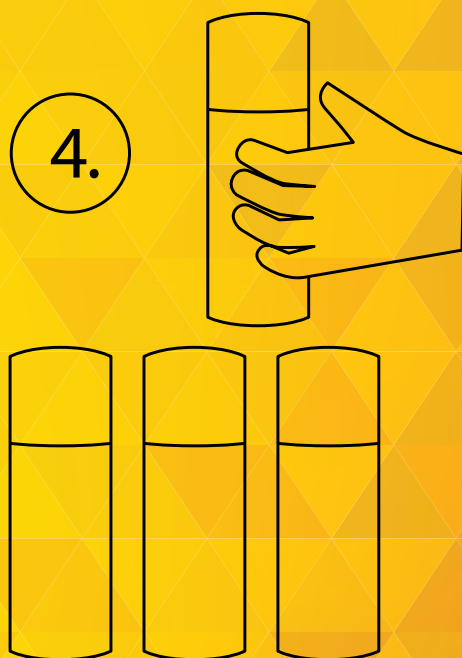
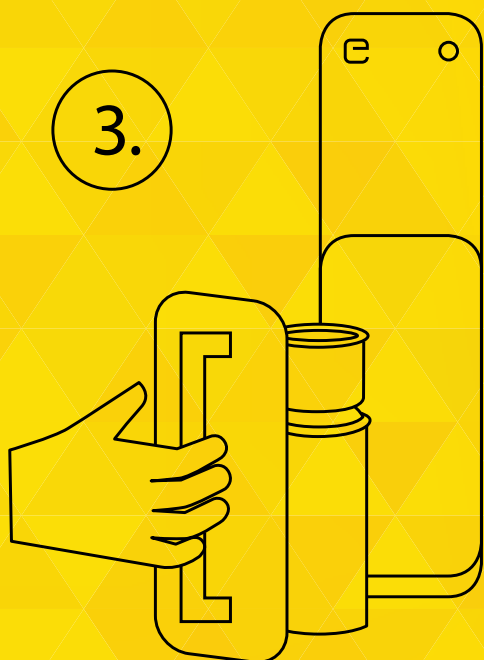
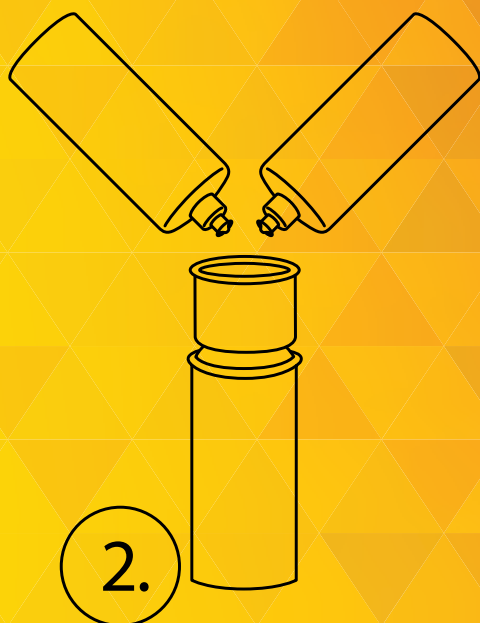
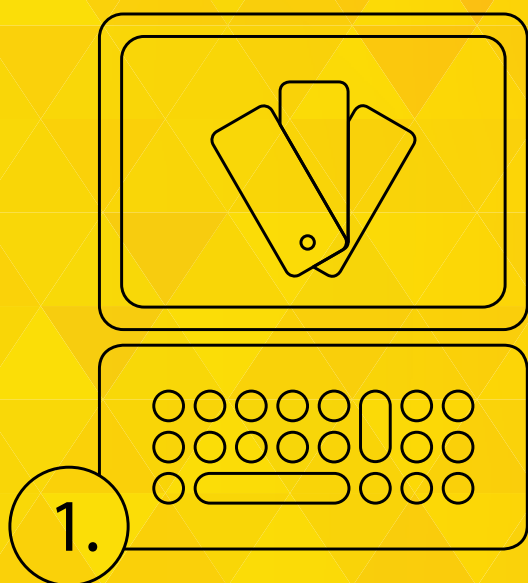
The tint bases are available in matt, semi-gloss and high gloss. The tint base contains 2K binder, hardener, solvents, additives and propellant.

③ Filling

USE ANY SPRAY PAINT filling machine. We recommend eFill®, the only electric, serial filling capable spray paint filling machine.

④ Long potlife

WORLD'S FIRST LONG POTLIFE 2-component custom spray paint lets the customer enjoy full value from the can. Since the reaction of the resin and hardener takes place when sprayed out into the atmospheric pressure, the customer can save leftover paint for later use.





Technical information



Tint base

CAN VOLUME: 400ml / 11oz
TINT BASE VOLUME: 300ml / 10oz
COLORANT VOLUME:
95ml +/- 5% depending
on the color
RESIN TYPE:
2-component epoxy
**RECOMMENDED
FILM THICKNESS:** one and
a half cross coats, 40 microns
DUST DRY: 45 min
TOUCH DRY: 3-5 hours

SURFACE HARDNESS: 12 hours
RAIN RESISTANT: 12 hours
PETROL RESISTANT: 8-10 days
FINAL HARDNESS: 8-10 days
POT LIFE: 36 months
POT LIFE TINTED CAN:
3 months

*Test the compatibility before
applying on any 1-component
paint layer.*



Tinting pastes

VOLUME: 1 liter / 33oz
RESIN TYPE:
2-component epoxy
CLEANING OF RESIDUES:
acetone and cloth
AMOUNT OF PASTES: 15
POT LIFE: 12 months

*Before tinting shake upside
down for at least 30 seconds.
Close the lid after tinting to
avoid evaporation.
Avoid contact with water.*



MASTON

Worldwide patent pending

MASTON

Maston Europe

Teollisuustie 10, FI-02880 Veikkola, Finland • Tel. +358 20 7188 580
www.maston.fi • maston@maston.fi

Maston North America

205 North Michigan Avenue, Suite 810, Chicago, Illinois, USA 60601
Tel: +1-702-718-1588 • Tollfree: 1-866-541-1694
www.maston.fi • sales@wisespray.com

ART NR:
CR2007IN

